

Graham Noot

081 514 0141

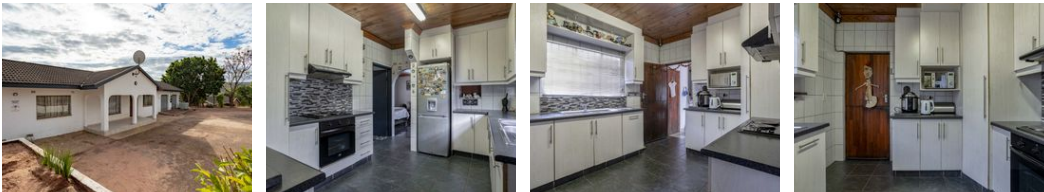
graham.noot@seeff.com

Contact Hillcrest & Kloof

031 765 5326

1st Floor, Seeff  
Christians Village Shopping Centre (Pick 'n Pay Centre)  
44 - 46 Old Main Road  
Hillcrest  
Durban  
3610

3 Bedroom House For Sale in Cliffdale



R1,350,000

 3

 1

 2

Monthly Bond Repayment R13,705.59

Calculated over 20 years at 10.75% with no deposit.

Transfer Costs R39,117.00      Bond Costs R27,105.00

These calculations are only a guide. Please ask your conveyancer for exact calculations.

Monthly Rates R800

Country Living off the Beaten Track

Set in the scenic surrounds of Cliffdale, this cosy 3-bedroom, double garage home has become available. Situated halfway between Durban and Pietermaritzburg, the property has easy access to the N3 freeway and the Hammarisdale distribution areas. This house is on a level neat garden with scenic views. The kitchen has an abundance of built in cupboards with an electric hob and undercounter oven. The lounge and dining room are open plan and airconditioned. There is also parking for additional vehicles.

If country living which is conveniently close to Hammarisdale, and Peacevale with easy access to the N3, then this is for you. Give me a call to arrange a viewing.

Features

Pets Allowed		Yes			
Interior		Exterior		Sizes	
Bedrooms	3	Garages	2	Floor Size	190m²
Bathrooms	1	Security	No	Land Size	3,569m²
Kitchens	1	Pool	No		
Recep. Rooms	2	Views	True		
Furnished	No				
Extras					
Air Conditioner Alarm System Burglar Bars Driveway Garden Outdoor Beams Oven & Hob					
Satellite Dish Septic Tank Tiled Floors Totally Fenced garage					

