



**Matty Kemp**  
076 680 6306  
matty.kemp@seeff.com



**Lynette Dorkin**  
082 293 8034

lynette.dorkin@seeff.com

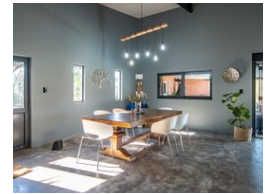
Contact Hillcrest & Kloof

031 765 5326

1st Floor, Seeff  
Christians Village Shopping Centre (Pick 'n  
Pay Centre)  
44 - 46 Old Main Road  
Hillcrest  
Durban  
3610



Web Ref RLS983579



R4,995,000

🛏 6 🚿 6.5 🏠 4

**Monthly Bond Repayment** R50,710.69

Calculated over 20 years at 10.75% with no deposit.

**Transfer Costs** R401,795.00 **Bond Costs** R61,035.00

These calculations are only a guide. Please ask your conveyancer for exact calculations.

**Monthly Levy** R1,500 **Monthly Rates** R3,120

## EXCEPTIONAL FAMILY ENTERTAINER WITH VALLEY VIEWS. OFF GRID LUXURY LIVING

Perched in an elevated position with breathtaking views over the valley, this outstanding family home is the ultimate entertainer's dream – and it could be your next move. Step inside to a beautifully designed open plan living space that effortlessly combines a modern kitchen with a large centre island, spacious dining area and lounge, all flowing seamlessly onto a massive patio. Complete with built in braai and bar, seating areas, salt chlorinated pool and cozy fire pit, this is outdoor living at its finest. Down the passage is the family lounge, four en-suite bedrooms with the main bedroom having doors to the patio, a walk in dresser and luxurious full en-suite bathroom.

On the lower level is a double garage with storage interleading into the two bed, 2 bath flatlet with open plan kitchen and living area. On the upper...

## Features

**Pets Allowed** Yes

### Interior

Bedrooms 6  
Bathrooms 6.5  
Kitchens 1  
Recep. Rooms 3  
Furnished No

### Exterior

Garages 4  
Carports / Parkings 2  
Security Yes  
Dom. Accom. 1  
Pool Yes  
Views True

### Sizes

Floor Size 671m<sup>2</sup>  
Land Size 2,000m<sup>2</sup>

### Extras

Granite Tops Guest Toilet Scullery Solar Heating Splash Pool Built In Braai Built in Wardrobes Centre Island Storage Curtain Rails Dishwasher Connection Driveway Open Plan Tiled Floors Totally Fenced Walk In Closet Washing Machine Connection Electric Gate Extractor Fan Patio Satellite Dish Freestanding

