



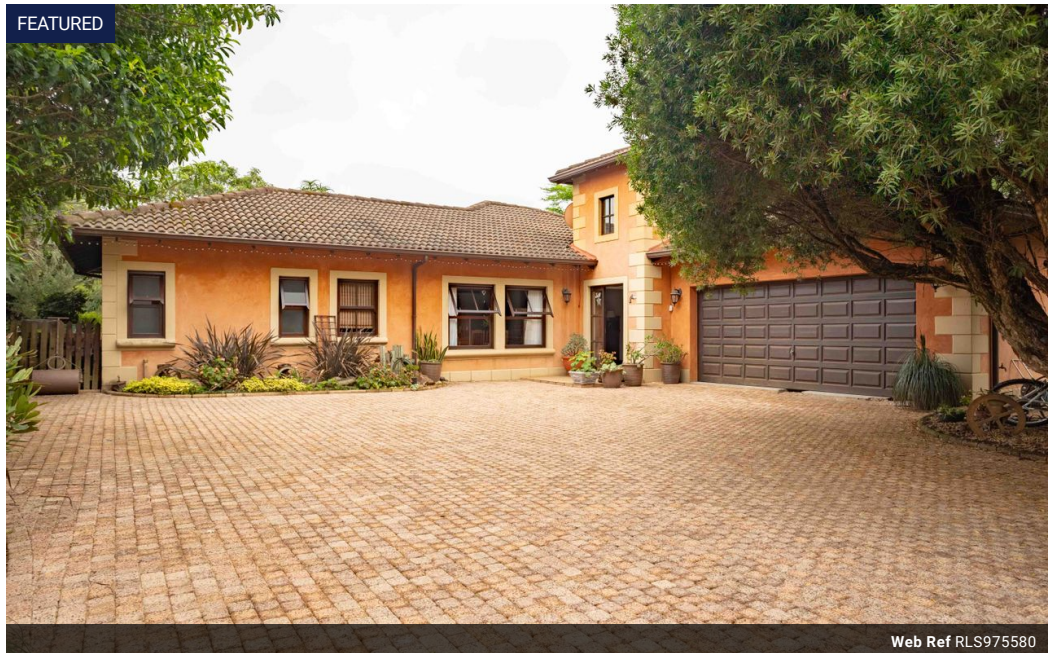
**Cara Ann Ridl**  
082 325 7030  
cara.ridl@seeff.com

Contact Hillcrest & Kloof

031 765 5326

1st Floor, Seeff  
Christians Village Shopping Centre (Pick 'n  
Pay Centre)  
44 - 46 Old Main Road  
Hillcrest  
Durban  
3610

FEATURED



Web Ref RLS975580



R3,795,000

4 Bedrooms 2 Bathrooms 2 Garages

**Monthly Bond Repayment** R39,171.55  
Calculated over 20 years at 11% with no deposit.

**Transfer Costs** R256,332.00 **Bond Costs** R49,725.00  
These calculations are only a guide. Please ask your conveyancer for exact calculations.

**Monthly Levy** R3,636 **Monthly Rates** R2,962

## PARADISE IN PLANTATIONS

Nestled in the heart of the sought-after Plantations Estate, this exquisite four-bedroom Tuscan-style home offers a seamless blend of elegance, comfort, and convenience. Designed for effortless living, this stepless home welcomes you with direct access from the double automated garage, ensuring ease and security. The well-established, level garden provides a serene and private retreat, perfect for those who appreciate outdoor living.

The thoughtfully designed layout features a luxurious, generously sized en-suite bedroom and a utility room on one wing of the home, offering a private sanctuary. On the opposite wing, three spacious additional bedrooms provide ample accommodation, with one currently serving as a second TV lounge. This versatile space holds great potential to be opened up and seamlessly extend into the undercover...

## Features

**Pets Allowed** Yes

Interior	
Bedrooms	4
Bathrooms	2
Kitchens	1
Recep. Rooms	2
Studies	1
Furnished	No

Exterior	
Garages	2
Security	Yes
Pool	No
Views	True

Sizes	
Floor Size	243m <sup>2</sup>
Land Size	990m <sup>2</sup>

### Extras

Air Conditioner Boomed Area Garden Granite Tops Grill Guard House Guest Toilet Scullery Security Gate Sliding Doors Built In Braai Built in Wardrobes Cooling Fans Communal Braai Area Creche Curtain Rails Dishwasher Connection Driveway Electric Garage Open Plan Oven & Hob Tiled Floors Under Counter Oven Washing Machine Connection Entrance Hall Paveway 24 Hour Access