

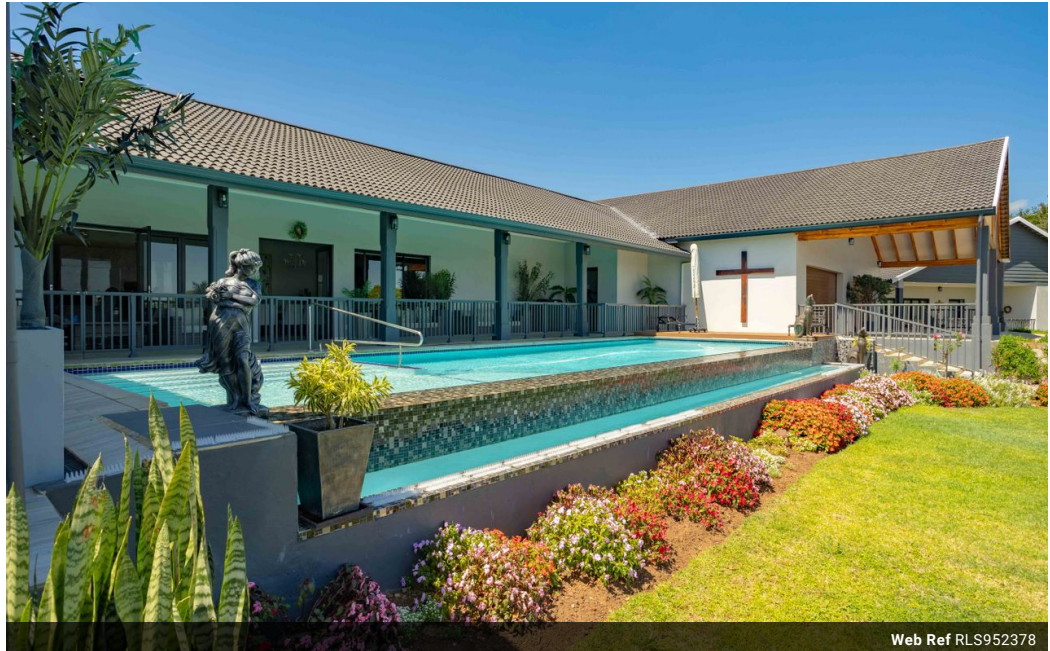


Cara Ann Ridl
082 325 7030
cara.ridl@seeff.com

Contact Hillcrest & Kloof

031 765 5326

1st Floor, Seeff
Christians Village Shopping Centre (Pick 'n
Pay Centre)
44 - 46 Old Main Road
Hillcrest
Durban
3610



Web Ref RLS952378



R16,900,000

8 10.5 4

Monthly Bond Repayment R171,573.69
Calculated over 20 years at 10.75% with no deposit.

Transfer Costs R1,852,984.00 **Bond Costs** R118,035.00
These calculations are only a guide. Please ask your conveyancer for exact calculations.

Monthly Rates R4,000

SHOWCASING THE BEST IN EQUESTRIAN GRANDEUR: A PARADISE OF OPULENCE AWAITS

Right in the heart of Elite horse country is this Equestrian property that dreams are made of! Set on one of the most prime addresses in Summerveld, this one-of-a-kind property is a testament to equestrian luxury. With secure positioning surrounded by exclusive properties, you couldn't ask for a better location. This haven for horse enthusiasts caters to every equestrian's desires, boasting proximity to equine hospitals and the Durban Shongweni Club, with safe expansive outrides right on your doorstep. To showcase this magnificent property is an absolute privilege. The original home was levelled to the ground upon purchase, and a new space was meticulously designed from top to bottom, resulting in an architectural masterpiece. Comprising a grand four-bedroom, all en-suite main home with an opulent study, this property is truly...

Features

Pets Allowed Yes

Interior		Exterior		Sizes	
Bedrooms	8	Garages	4	Floor Size	1,642m ²
Bathrooms	10.5	Carports / Parkings	6	Land Size	25,000m ²
Kitchens	3	Security	Yes		
Recep. Rooms	6	Dom. Accom.	3		
Studies	2	Pool	Yes		
Furnished	No	Views	True		

Extras

24 Hour Access 24 Hour Response Air Conditioner Alarm System Balcony Garden Gas Hob Granite Tops Guest Toilet Scullery Septic Tank Sliding Doors Borehole Built In Braai Built in Wardrobes Burglar Bars Centre Island Cooling Fans Intercom Special Lights Storage Strong Room Curtain Rails Dishwasher Connection Driveway Electric Garage Electric Fencing Laundry Open Plan Oven & Hob Pantry Tiled Floors Totally Fenced Totally Walled Veranda Walk In Closet Washing Machine Connection Electric Gate Entrance Hall Extractor Fan Fireplace Covered Patio Pressed Ceilings Wallpaper Water Tanks 13 Stables Horse walker

